

# Wettiner

866020 Pigm.: 29%

Born: 30.10.2018  
DE 09 54030000

aAa 546312



♂ WABAN (♂ WILLE), (♀ GISELLA)

♀ MARINA (♂ RALDI)

6/5 10015 4.14 415 3.74 375

♀ MANYA (♂ HUTERA)

3/3 10779 4.31 465 3.52 380



Proof: ZAR / 12-2024

Fleckvieh

Wettiner

TMI  
**130**  
98%

Fitness

Muscling

Teat length

## Milk

MI 116 99%

<b>Milk</b>	<b>Fat</b>	<b>Protein</b>
+611 kg	+0.01 %	+0.00 %
	+27 kg	+22 kg

<b>Daughters</b>	2195
<b>Herds</b>	1018

<b>Cappa-Casein</b>	AA
<b>Beta-Casein</b>	A1A1

## Beef Performance

BI 94 99%

<b>Daily net gain</b>	91 99%
-----------------------	--------

<b>Carcass percentage</b>	89 99%
---------------------------	--------

<b>Carcass grade</b>	104 99%
----------------------	---------

## Fitness

FIT 122 97%

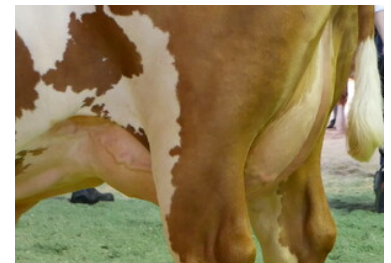
<b>Longevity</b>	119 93%
<b>Udder health</b>	122 98%
<b>Calving ease pat.</b>	91 99%
<b>Calving ease mat.</b>	107 98%
<b>Prod. increase</b>	118 93%
<b>Persistence</b>	108 99%
<b>Som. cell count</b>	123 99%
<b>Fertility mat.</b>	111 95%
<b>Milking speed</b>	107 99%
<b>Milking temperament</b>	113 94%
<b>Vitality</b>	104 98%
<b>Ecol. TMI</b>	126 98%
<b>Claw health index</b>	91 95%

## Type traits 666 Daughters

Trait	Trend	76	88	100	112	124	Index	Trend
Frame							98	
Muscling							114	
Feet & Legs							94	
Udder							106	
Height at cross	small						96	large
Body length	short						98	long
Rump width	narrow						102	wide
Body depth	shallow						106	deep
Rump angle	ascending						93	sloped
Hock angularity	straight						103	sickled
Hock develop.	swollen						93	dry
Pasterns	weak						94	strong
Foot angle	low angles						100	steep angles
Fore udder length	short						97	long
Rear udder length	short						104	long
Fore udder att.	loose						110	tight
Susp. ligament	weak						100	strong
Udder depth	deep						103	high
Teat length	short						120	long
Teat thickness	thin						104	thick
Teat placem. (front)	wide						87	close
Teat placem. (rear)	wide						85	close
Teat direction (rear)	outwards						94	inwards
Udder cleanness	add. teats						105	clean udder



Covid, daughter of Wettiner, 1st lac.



Udder of Covid