

Corellian

WEH Corellian

811708 born: 02.06.2023
 HOLDEUM000365421464
aAa 432561



♂ **Capitol** (♂ Carenzo)

♀ WEH Josefa VG 87 (♂ **Copyright**)

2/1 11151 4.10 457 3.60 401

♀ WEH Jalapeno (♂ **Benz**)

100 T. 2658 4.18 111 3.61 96

♀ WEH Jolana VG 85 (♂ **Epic**)



Holstein

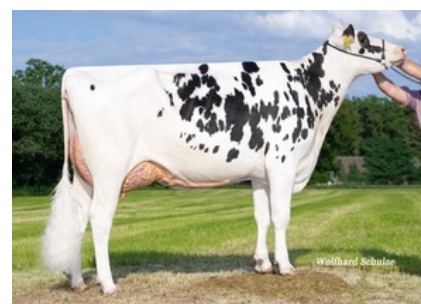
Wolfhard Schulze

Corellian

RZG 153 80 %	RZ€ 2323 83 %	RZM 152 73 %	RZE 123 70 %	RZS 119 76 %	RZN 116 66 %	RZR 99 52 %	RZKd 106 61 %	RZKm 105 62 %	RZD 95 75 %
----------------------------------	-----------------------------------	----------------------------------	----------------------------------	----------------------------------	----------------------------------	---------------------------------	-----------------------------------	-----------------------------------	---------------------------------

RZhealth	115	71 %
RZudderfit	109	61 %
RZhoof	104	52 %
RZmetabol	108	56 %
RZrepro	105	53 %
RZcalfhealth	105	49 %
DDcontrol	104	51 %

RZRobot	---	-- %
RZorganic	134	81 %
RZpersistence	114	61 %
RZFeedEfficiency	98	41 %
Caseine	AA / A2A2	
Milk	Fat	Protein
+2386 kg	-0.07 %	-0.13 %
	+86 kg	+66 kg
Reliability	73 %	
Daug./ Herds	- / -	



M: WEH Josefa

Type traits							
Daughters	Herds	Reliability	D.type	Body	F & L	Udder	
-	-	70%	115	107	117	110	

		76	88	100	112	124	
Stature	small						107 tall
Rib Structure	flat						105 arched
Body depth	shallow						106 deep
Strength	narrow						97 wide
Rump angle	ascending						106 sloped
Rump width	narrow						106 wide
Rear leg angle	straight						84 sickled
Foot angle	low angle						108 steep angle
Hocks	swollen						108 clean
Rear leg set r.v.	toes out						112 parallel
Front Feet Orientation	outward						98 straight
Locomotion	bad						114 good
Rear udder h.	low						119 high
Suspens. lig.	weak						113 strong
Teat placem.f.	wide						95 close
Teat placem.r.	wide						112 close
Fore udder att.	loose						104 tight
Udder Balance	rear deep						119 front deep
Udder depth	deep						103 shallow
Teat length	short						95 long

Proof: VIT / 12-2024