

SNICKERS P

586345
NLD 000576852674



GGI-SPERMEX
Genetics made in Germany

Pp*

Born: 03.05.2018

Kappa-Casein: AB

Beta-Casein: A1/A2

Proofs 04/2020



Snickers P

♂ MR Salvatore RC (♂ Cogent Supershot)

♀ Caudumer LOL 371 (1) VG 86 (♂ DE-SU 11236 Balisto-ET)
1 lac 9723 4.88 474 3.69 359

♀ Caudumer LOL 305 (1) VG 87 (♂ Arron Doon West Port Magna P)
1 lac 9502 4.50 428 3.93 373

♀ Caudumer LOL 292 (1) VG 85 (♂ Lawn Boy)

gRZG 154 (74%)	gRZM 148 (75%)	gRZE 125 (65%)	gRZS 111 (77%)	gRZN 114 (67%)	gRZR 103 (56%)	gRZKm 102 (64%)	gRZKd 111 (64%)	gRZD 105 (72%)	RZhealth 104 (57%)	gRZRobot 119 (72%)
-----------------------------	-----------------------------	-----------------------------	-----------------------------	-----------------------------	-----------------------------	------------------------------	------------------------------	-----------------------------	---------------------------------	---------------------------------

Milk Production Index

gRZM 148

Rel. 75 %	Milk kg 1778 kg	Fat % 0.14 %	Fat kg 87 kg	Protein % -0.05 %	Protein kg 57 kg
---------------------	---------------------------	------------------------	------------------------	-----------------------------	----------------------------

Health

RZhealth 104

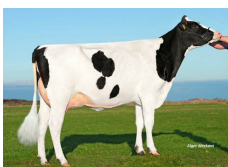
RZudderfit 103 (61%)	RZhoof 106 (52%)	RZRepro 100 (53%)	RZMetabol 105 (56%)
-----------------------------------	-------------------------------	--------------------------------	----------------------------------

Conformation

gRZE 125

Rel. 65 %	Dairy Type 110	Body 103	Feet & legs 119	Udder 123
---------------------	--------------------------	--------------------	---------------------------	---------------------

		76	88	100	112	124		
Stature	small						111	tall
Angularity	non-angular						110	angular
Body depth	shallow						102	deep
Strength	weak						99	strong
Rump angle	ascending						91	sloped
Rump width	narrow						105	wide
Rear leg set side view	straight						99	sickled
Foot angle	low angle						112	straight
Hock quality	coarse						104	clean
Rear leg set rear view	toes out						119	parallel
Locomotion	bad						111	good
Rear udder height	low						126	high
Suspensory ligament	weak						101	strong
Teat placement (front)	wide						112	close
Teat placement (rear)	wide						103	close
Fore udder attachment	loose						114	tight
Udder depth	deep						111	shallow
Teat length	short						102	long



Caudumer Lol 371