

SELFIE

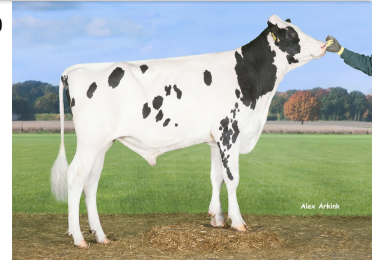
154234
DEU 000666860668



GGI-SPERMEX
Genetics made in Germany

Born: 03.12.2015 Kappa-Casein: AA* Beta-Casein: A1/A1

Proofs 04/2020



Selfie 154234

♂ **Cogent Supershot** (♂ Seagull-Bay Supersire)

♀ **Heidenskipster Mccutchen Amy** (1) VG 85 (♂ DE-SU BKM McCutchen 1174)
2 lac 11812 3.84 453 3.44 406

♀ **SANDY-VALLEY IO AMETHYST-ET** (1) VG 87 (♂ REGANCREST ALTOIOTA)
1. lac 10555 4.05 427 3.39 358

♀ **SANDY-VALLEY PLANE SAPPHIRE** (1) VG 88 (♂ Planet)

gRZG 137 (75%)	gRZM 128 (75%)	gRZE 118 (72%)	gRZS 104 (77%)	gRZN 118 (69%)	gRZR 112 (59%)	gRZKm 111 (68%)	gRZKd 95 (92%)	gRZD 102 (82%)	RZhealth 111 (60%)
-----------------------------	-----------------------------	-----------------------------	-----------------------------	-----------------------------	-----------------------------	------------------------------	-----------------------------	-----------------------------	---------------------------------

Milk Production Index

gRZM 128

Rel. 75 %	Milk kg 1736 kg	Fat % -0.22 %	Fat kg 43 kg	Protein % -0.19 %	Protein kg 37 kg
------------------	------------------------	----------------------	---------------------	--------------------------	-------------------------

Health

RZhealth 111

RZudderfit 106 (64%)	RZhoof 112 (55%)	RZRepro 108 (56%)	RZMetabol 108 (60%)
-----------------------------------	-------------------------------	--------------------------------	----------------------------------



Conformation

gRZE 118

Rel. 72 %	Dairy Type 104	Body 114	Feet & legs 110	Udder 115
------------------	-----------------------	-----------------	------------------------	------------------

		76	88	100	112	124	
Stature	small						119 tall
Angularity	non-angular						103 angular
Body depth	shallow						111 deep
Strength	weak						114 strong
Rump angle	ascending						101 sloped
Rump width	narrow						109 wide
Rear leg set side view	straight						103 sickled
Foot angle	low angle						103 straight
Hock quality	coarse						104 clean
Rear leg set rear view	toes out						104 parallel
Locomotion	bad						109 good
Rear udder height	low						120 high
Suspensory ligament	weak						110 strong
Teat placement (front)	wide						126 close
Teat placement (rear)	wide						124 close
Fore udder attachment	loose						110 tight
Udder depth	deep						111 shallow
Teat length	short						95 long



Bine VG 86 1



Brigitte