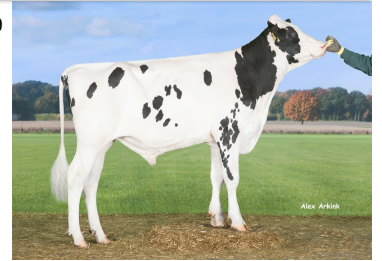


SELFIE**154234**
DEU 000666860668**GGI-SPERMEX**
Genetics made in Germany

Born: 03.12.2015 Kappa-Casein: AA Beta-Casein: A1/A1

Proofs 12/2019



Selfie 154234

♂ **Cogent Supershot** ♂ Seagull-Bay Supersire)♀ **Heidenskipster Mccutchen Amy** (1) VG 85 ♂ DE-SU BKM McCutchen 1174
2 lac 11812 3.84 453 3.44 406♀ **SANDY-VALLEY IO AMETHYST-ET** (1) VG 87 ♂ REGANCREST ALTOIOTA
1. lac 10555 4.05 427 3.39 358♀ **SANDY-VALLEY PLANE SAPPHIRE** (1) VG 88 ♂ Planet)

gRZG 141 (72%)	gRZM 133 (75%)	gRZE 125 (66%)	gRZS 104 (77%)	gRZN 119 (69%)	gRZR 112 (59%)	gRZKm 120 (65%)	gRZKd 95 (91%)	gRZD 108 (72%)	RZhealth 109 (59%)
-----------------------------	-----------------------------	-----------------------------	-----------------------------	-----------------------------	-----------------------------	------------------------------	-----------------------------	-----------------------------	---------------------------------

Milk Production Index**gRZM 133**

Rel. 75 %	Milk kg 1883 kg	Fat % -0.21 %	Fat kg 51 kg	Protein % -0.18 %	Protein kg 43 kg
---------------------	---------------------------	-------------------------	------------------------	-----------------------------	----------------------------

Health**RZhealth 109**

RZudderfit 104 (63%)	RZhoof 112 (54%)	RZRepro 108 (55%)	RZMetabol 107 (58%)
-----------------------------------	-------------------------------	--------------------------------	----------------------------------

**Conformation****gRZE 125**

Rel. 66 %	Dairy Type 111	Body 116	Feet & legs 110	Udder 123
---------------------	--------------------------	--------------------	---------------------------	---------------------

76 88 100 112 124

Stature	small				125	tall
Angularity	non-angular				109	angular
Body depth	shallow				110	deep
Strength	weak				111	strong
Rump angle	ascending				103	sloped
Rump width	narrow				110	wide
Rear leg set side view	straight				106	sickled
Foot angle	low angle				102	straight
Hock quality	coarse				103	clean
Rear leg set rear view	toes out				105	parallel
Locomotion	bad				109	good
Rear udder height	low				126	high
Suspensory ligament	weak				113	strong
Teat placement (front)	wide				130	close
Teat placement (rear)	wide				125	close
Fore udder attachment	loose				116	tight
Udder depth	deep				117	shallow
Teat length	short				97	long



Brigitte



Sandy-Valley IO Amethyst 1/VG 87