

HOTSPOT P

684671
DEU 000539675034



GGI-SPERMEX
Genetics made in Germany

Pp*

Born: 17.01.2017 Kappa-Casein: AB Beta-Casein: A1/A2

Proofs 08/2019



Hotspot P

♂ **ENDCO SUPERHERO** (♂ Cogent Supershot)
 ♀ **WIL Herz P** (1) VG 85 (♂ VIEW-HOME ERNHDT TENN-ET)
 1/1 lac 12535 3.64 456 3.48 436
 ♀ **WIL Hira** (1) VG 85 (♂ SANDY-VALLEY SALOON-ET)
 1/1 lac 8768 4.21 369 3.50 307
 ♀ **Konny** (1) VG 85 (♂ Snowman)

gRZG 153 (70%)	gRZM 143 (75%)	gRZE 129 (64%)	gRZS 104 (77%)	gRZN 119 (66%)	gRZR 117 (54%)	gRZKm 120 (61%)	gRZKd 103 (73%)	gRZD 114 (71%)	RZhealth 110 (56%)	gZRRobot 124 (71%)
-----------------------------	-----------------------------	-----------------------------	-----------------------------	-----------------------------	-----------------------------	------------------------------	------------------------------	-----------------------------	---------------------------------	---------------------------------

Milk Production Index

gRZM 143

Rel. 75 %	Milk kg 772 kg	Fat % 0.41 %	Fat kg 72 kg	Protein % 0.28 %	Protein kg 54 kg
---------------------	--------------------------	------------------------	------------------------	----------------------------	----------------------------

Health

RZhealth 110

RZudderfit 105 (60%)	RZhoof 111 (50%)	RZRepro 113 (52%)	RZMetabol 101 (54%)
-----------------------------------	-------------------------------	--------------------------------	----------------------------------



Conformation

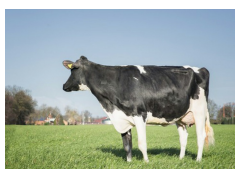
gRZE 129

Rel. 64 %	Dairy Type 115	Body 104	Feet & legs 120	Udder 128
---------------------	--------------------------	--------------------	---------------------------	---------------------

		76	88	100	112	124	
Stature	small						115 tall
Angularity	non-angular						117 angular
Body depth	shallow						102 deep
Strength	weak						95 strong
Rump angle	ascending						98 sloped
Rump width	narrow						106 wide
Rear leg set side view	straight						90 sickled
Foot angle	low angle						106 straight
Hock quality	coarse						113 clean
Rear leg set rear view	toes out						109 parallel
Locomotion	bad						114 good
Rear udder height	low						126 high
Suspensory ligament	weak						112 strong
Teat placement (front)	wide						100 close
Teat placement (rear)	wide						98 close
Fore udder attachment	loose						119 tight
Udder depth	deep						120 shallow
Teat length	short						100 long



Stammkuh: Batkes Outside Kora EX 94



MM: WIL Hira (1) VG 85