

Big Ben

571921
DNK 00000258602



GGI-SPERMEX
Genetics made in Germany

CVF BLF BYF

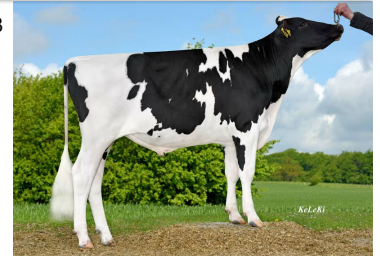
Born: 03.03.2016

aAa: 423615

Kappa-Casein: AA

Beta-Casein: A2/A2

Proofs 08/2018



Big Ben

♂ DE-SU 12109 Battlecry-ET (♂ DE-SU 11236 BALISTO-ET)

♀ Tirsvad Sargeant Nibali (♂ Seagull-Bay Sargeant-ET)

♀ Tirsvad Bookem Nessie (1) VG 89 (♂ DE-SU 521 BOOKEM)

1 lac 14118 3.70 522 3.23 456

♀ Tirsvad Gibor Netto (2) EX 91 (♂ Gibor)

gRZG 149 (67%)	gRZM 138 (72%)	gRZE 127 (57%)	gRZS 109 (76%)	gRZN 125 (63%)	gRZR 110 (50%)	gRZKm 109 (58%)	gRZKd 99 (61%)	gRZD 103 (67%)	RZFIT 136 (58%)	gRZRobot 119 (67%)
-----------------------------	-----------------------------	-----------------------------	-----------------------------	-----------------------------	-----------------------------	------------------------------	-----------------------------	-----------------------------	------------------------------	---------------------------------

Milk Production Index

gRZM 138

Rel. 72 %	Milk kg +1803 kg	Fat % -0.12 %	Fat kg +59 kg	Protein % -0.07 %	Protein kg +53 kg
--------------	---------------------	------------------	------------------	----------------------	----------------------

Conformation

gRZE 127

Daughters	farms	Rel.	Dairy Type	Body	Feet & legs	Udder
0	0	57 %	118	108	119	122
		76	88	100	112	124
Stature	small					117 tall
Angularity	non-angular					118 angular
Body depth	shallow					105 deep
Strength	narrow					100 strong
Rump angle	ascending					103 sloped
Rump width	narrow					103 wide
Rear leg set side view	straight					98 sickled
Foot angle	low angle					105 steep
Hock quality	coarse					112 clean
Rear leg set rear view	toes out					112 parallel
Locomotion	bad					113 good
Rear udder height	low					126 high
Suspensory ligament	weak					110 strong
Teat placement (front)	wide					100 close
Teat placement (rear)	wide					100 close
Fore udder attachment	loose					111 tight
Udder depth	deep					116 shallow
Teat length	short					101 long